

VIZIO

3D LED LCD HDTV

XVT3D424SV / XVT3D474SV / XVT3D554SV

QUICK START GUIDE

IMPORTANT SAFETY INFORMATION FOR VIEWING 3D CONTENT



You may experience discomfort while watching 3D content. You may feel symptoms of eye strain, vision fatigue, color or depth distortion, motion sickness, nausea, dizziness, disorientation, or other discomforts. If you experience any of these symptoms, stop watching and take a break for at least thirty minutes before resuming. If the symptoms are severe or continue even after you have stopped watching 3D content, consult a doctor.



Take care to monitor children's watching of 3D content. Children (including teenagers) may be more at risk of experiencing discomfort while watching 3D content and less likely to report symptoms. Monitor children's 3D content viewing and watch for signs of discomfort.



Some viewers may be susceptible to epileptic seizures or strokes when viewing 3D images, even if those conditions have not been previously diagnosed. If you or anyone in your family has a history of seizures or strokes, or if you have any other reason to think you or someone under your supervision may be susceptible to epileptic seizures or strokes, consult a doctor before watching 3D content.



Even if you do not experience any of the above symptoms, take regular breaks from watching 3D content.

COMPLETE YOUR 3D EXPERIENCE



Immerse yourself in a vivid, high-definition, 3D world with **VIZIO Full HD 3D Glasses**. When combined with your VIZIO 3D HDTV, these Full HD 3D glasses make your 3D movies and games come to life!

- Active Shutter Technology with 1080p Full HD performance
- High contrast 3D and wide viewing angle
- 24 hours of battery life
- USB cable recharges from included adapter, TV, Blu-ray player, or notebook PC

Visit www.VIZIO.com to purchase online.



PACKAGE CONTENTS



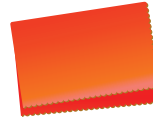
VIZIO 3DTV with Stand



Bluetooth® Remote Control with Batteries



Power Cord



Cleaning Cloth



Safety Cable



User Guide and Quick Start Guide

USING THE BLUETOOTH® REMOTE CONTROL

Device Power/Standby: Turn external device on or off.

Input: Change input device.

A/V Controls: Control external device.

List: Display list of available channels.

Exit: Close on-screen menu.

OK: Select highlighted menu option.

Back: Go to previous menu screen.

VIA: Start VIZIO Internet Apps.

Volume Up/Down: Increase or decrease volume.

Mute: Turn sound off or on.

3D: Activate 3D content.

Power/Standby: Turn the TV on or off.

Info: Display program information and time.

Menu: Display on-screen menu.

Arrow: Navigate on-screen menu or episode guide.

Guide: Display episode guide.

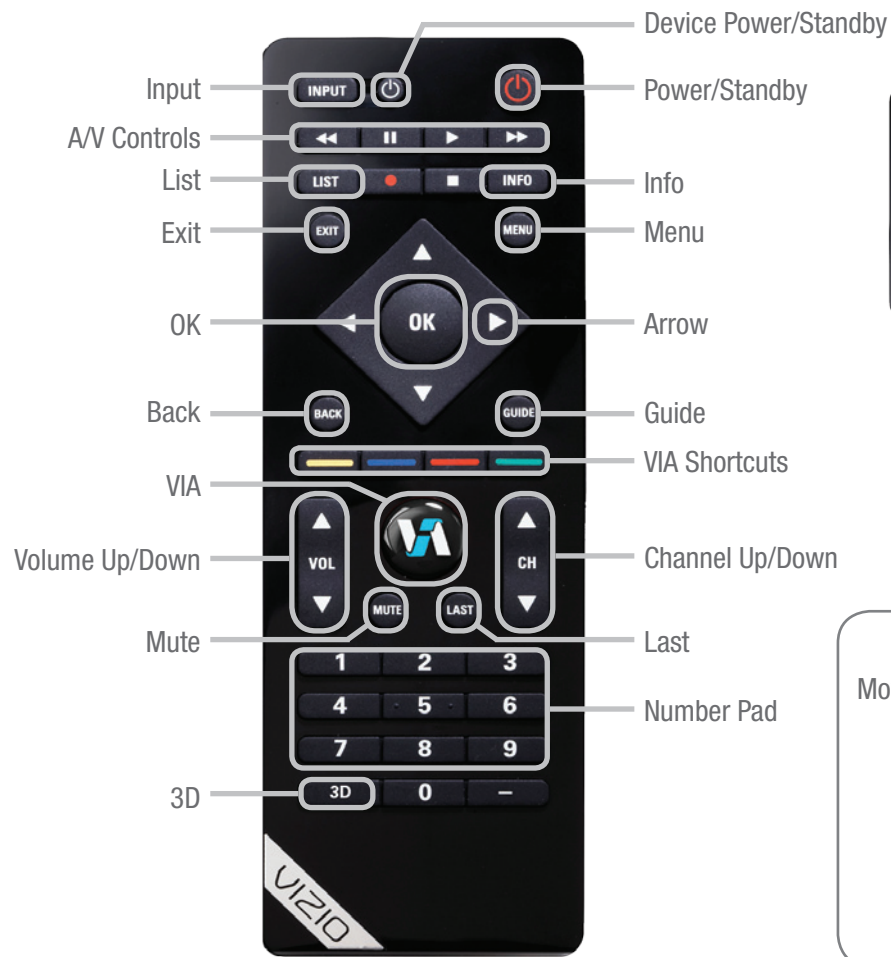
VIA Shortcuts: Control VIZIO Internet Apps (see diagram).

Channel Up/Down: Change channel up or down.

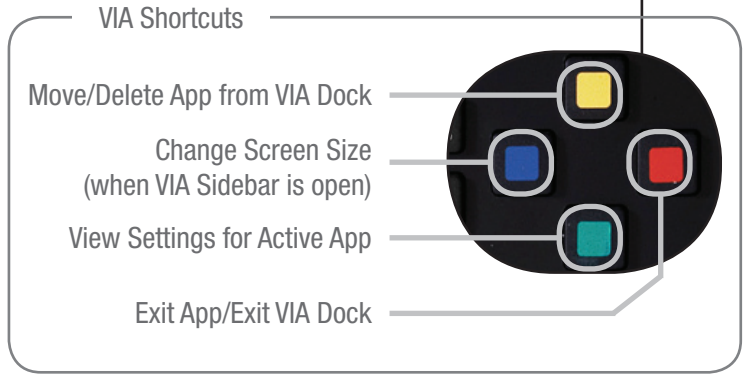
Last: Return to previous channel.

Number Pad: Enter a channel.

QUERTY Keypad: Enter letters and numbers.



Arrow QWERTY Keypad



INSTALLING YOUR TV



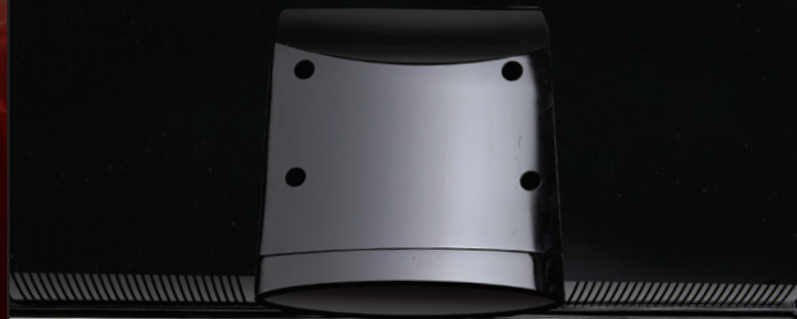
Though your TV has a stand included, it can also be mounted on a wall.

VIZIO recommends the **XMT1200 Ultra Slim Tilt Universal Wall Mount**. This easy-to-install wall mount supports 37" to 60" HDTVs up to 120 pounds and features:

- A built-in bubble level and is less than 2" thin
- Tilts up to 15° downward – perfect for mounting above eye level
- Includes \$10,000 insurance and 1-year warranty

Visit www.VIZIO.com to purchase online.

1



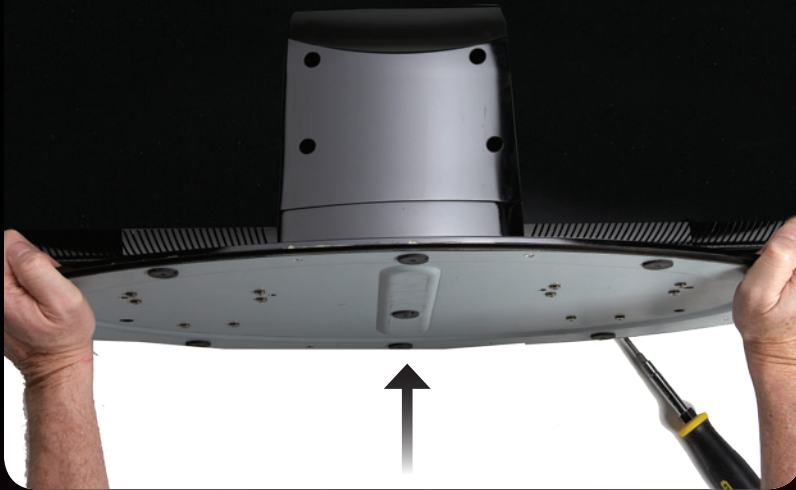
Ensure the TV is off.

Place the TV screen-down on a clean, flat surface. To prevent scratches or damage to the screen, place the TV on a soft surface, such as carpet, rug, or blanket.



Some models already have the base attached. If your TV already has the base attached, proceed to Step 3.

2



Slide the base plate into the slot on the stand, making sure the arrow on the base plate points toward the front of the TV.

Securely tighten the wing screw in the center of the base plate.

3



Move the TV with attached stand into an upright position and place on a flat, level, and stable surface.

To prevent the TV from falling over, attach one end of the included safety cable to the wall behind the TV. Attach the other end to one of the wall-mounting holes on the back of the TV.

BEFORE THE FIRST-TIME SETUP



To get the best high-resolution picture and sound on your new 3D HDTV, connect your devices with an HDMI cable.

To make the best HDMI connection, use **VIZIO XCH408D1 Premium High-Speed Flat HDMI Cables**. VIZIO HDMI cables are manufactured to produce the best picture on VIZIO 3D HDTVs and feature:

- 3D ready - Bring true 3D gaming and titles to your 3D HDTV
- 1080p and for full HD video and future Ultra-HD video
- Great flexibility for thin wall mounts
- Stays securely connected at sharp angles
- Limited lifetime warranty

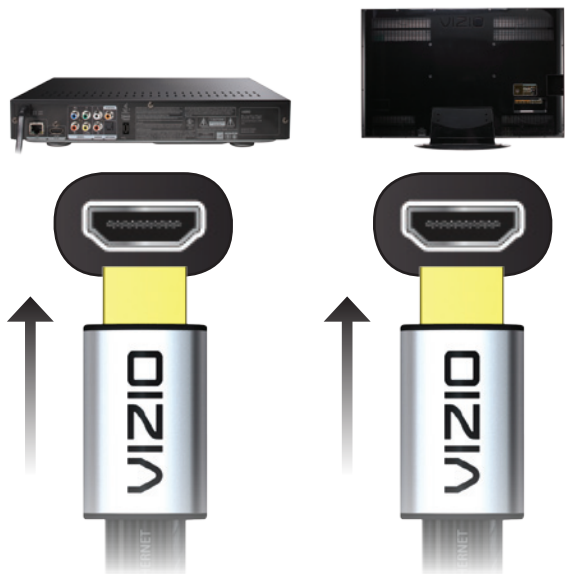
Visit www.VIZIO.com to purchase online.



Connect the power cord to the back of the 3D HDTV.

Plug the power cord into an electrical outlet.

2



Connect your HDMI devices. These include Blu-ray™ players, game consoles, and cable TV boxes.

For each device, connect one end of an HDMI cable to the device, and connect the other end of the HDMI cable to an available HDMI port on your HDTV.

Ensure the cables are securely connected.

3



Remove the battery cover by pressing gently on the arrow and sliding away from the remote.

Correctly insert the batteries. The + and - symbols on the batteries must correspond to the + and - symbols inside the battery compartment.

Replace the battery cover by gently sliding it back into place.

COMPLETING THE FIRST-TIME SETUP



Add home theater surround sound without the excess clutter of front and center speakers and excess wires.

The **VIZIO VHT510 5.1 Surround Sound Home Theater with Wireless Subwoofer** delivers big home theater sound in a sleek design that's perfect for your 3D HDTV:

- Universal 5.1 soundbar with rear satellite speakers and wireless subwoofer turns any HDTV into a full surround sound home theater
- Wireless subwoofer uses Wireless HD Audio™ 2.4 GHz, so you can place it anywhere in the room
- Premium sound with Dolby Digital®, DTS, SRS CircleCinema HD™ and SRS TruVolume™.

Visit www.VIZIO.com to purchase online.

1



Press the **Power/Standby** button on the remote to turn the TV on. The Setup App starts automatically.

Activate the remote by pressing **Record** and the **Green VIA Shortcut** button for 5 seconds, then highlight **Begin Activation** and press **OK**.

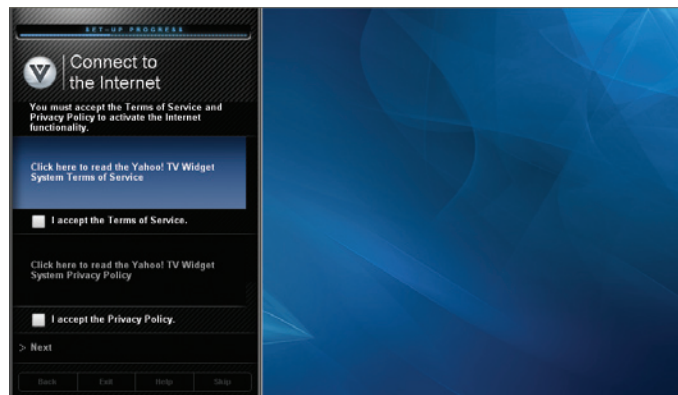
Wait for the remote to be found.

2



When the remote is found, use the **Arrow Up/Down** buttons on the remote to highlight **Connect to the Internet** and press **OK**.

3



Use the **OK** and **Arrow Up/Down** buttons on the remote to read and accept the Terms of Service and Privacy Policy for Yahoo! TV Widgets.

When you are finished, highlight **Next** and press **OK**.

Turn Page to Step 4

COMPLETING THE FIRST-TIME SETUP (CONTINUED)

4



Select the name of your wireless network from the list of available networks and press **OK**.

Enter the network key using the **QUERTY Keypad** on the remote, then highlight **Connect** and press **OK**.



If the 3D HDTV is connected to your network with an ethernet cable, you will not see this screen.

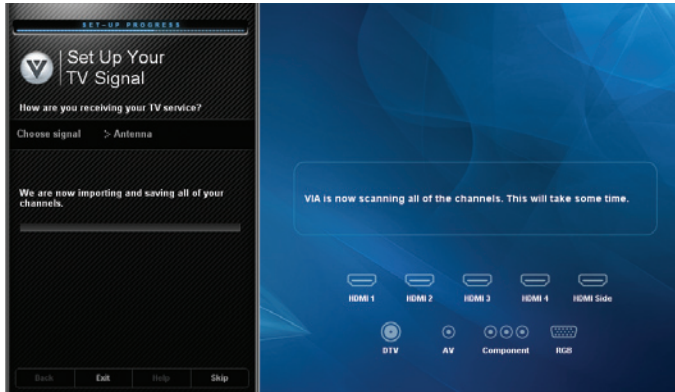
5



Enter your First Name, Last Name, Phone Number, ZIP Code, and E-mail Address using the **QUERTY Keypad** on the remote.

Highlight **Next** and press **OK**.

6



Choose the input to which your TV signal is connected.

Answer the on-screen questions about your TV connection using the **Arrows** and **OK** button on the remote.

7



Choose the device you would like to connect.

Answer the on-screen questions about your TV connection using the **Arrows** and **OK** button on the remote.

When you have finished adding devices, highlight **Exit to Live TV** and press **OK**.

USING VIZIO INTERNET APPS



FREE Trial! Go to www.netflix.com/VIZIO. See Terms of Use for details.



Listen to millions of songs on demand. Go to www.rhapsody.com/VIZIO to get your free 30-day trial.*



Activate VUDU on your VIZIO VIA TV to receive a FREE 1080p HD RENTAL.**



For the best online experience, VIZIO recommends the next-generation **XWR100 Dual-Band HD Video and Wireless Internet Router**. This state-of-the-art router prioritizes the sending of media files over regular data files, delivering a superior streaming experience with fewer delays.

Visit www.VIZIO.com to purchase online.

*US only. Credit Card required. See site for complete terms.

**VUDU account activation required.

1



VIA Button

Press the **VIA** button on the remote.

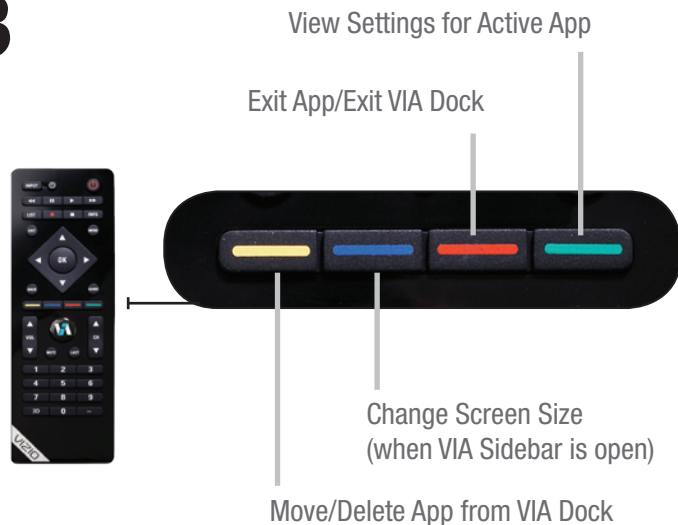
2




To start an App, use the **Left/Right Arrow** buttons to highlight an App from the App Bar and press **OK**.

The highlighted App is in the lower left corner of the screen.

3



Once you have started an App, use the **Arrow**, **OK**, and **VIA Shortcut** buttons on the remote to control the App.

 To use VIZIO Internet Apps, the 3D HDTV must be set up with a high-speed internet connection. If you did not set up your network during First-Time Setup, see **Setting Up Your Network Connection** in the User Guide.

VIEWING 3D CONTENT



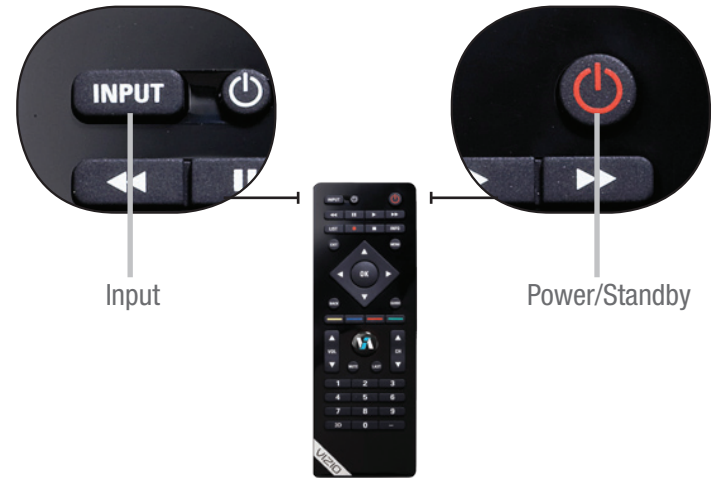
To view high-definition 3D content on your 3D HDTV, you will need:

- A 3D Blu-ray™ player
- A Blu-ray 3D™ disc
- VIZIO Full HD 3D Glasses
- A 3D-ready HDMI cable connecting the 3D Blu-ray player to the 3D HDTV

For a superior 3D experience, pair your 3D HDTV with the **VIZIO 3D Blu-Ray Player**.

Go to www.VIZIO.com to purchase online.

1

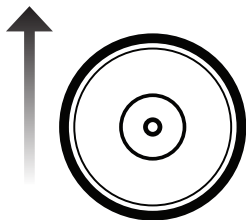


Turn your 3D Blu-ray player off.

Press the **Power/Standby** button on the remote to turn the TV on.

Press the **INPUT** button and select the input to which the Blu-ray player is connected (HDMI-1, HDMI-2, etc).

2



*Blu-ray Player Not Included

Turn your 3D Blu-ray player* on.

Insert your Blu-ray 3D disc* into your 3D Blu-ray™ player.

Select the **Play Movie** option in the Blu-ray 3D™ disc's main menu.

3



*3D Glasses Not Included

The 3D HDTV asks if you would like to watch the movie in 3D.

Select **Yes** and press **OK**.

Turn on your VIZIO Full HD 3D Glasses* and put them on.

HELP TOPICS

There is no power.

- Ensure the power cord is securely connected to the AC socket on the TV and a working electrical outlet.
- Press the **Power/Standby** button on the remote or press the Jag Wheel on the left side of the TV.
- Try plugging the power cord into a different electrical outlet.

There is a picture, but there is no sound.

- Press the Volume Up button on the remote, or turn the Jag Wheel on the left side of the TV.
- Press the **MUTE** button on the remote to ensure Mute is off.
- Press **MENU**, then select **TV Settings > Audio**. Ensure **TV Speakers** is set to **On**.

The picture quality seems low.

- View high-definition (HD) programs when possible.
- Ensure all cables are securely connected.

I cannot view 3D content.

- Ensure you have a 3D Blu-ray™ player, VIZIO 3D glasses, and a Blu-ray 3D™ disc.
- Turn your 3D HDTV and 3D Blu-ray player off. Turn the 3D Blu-ray Player on first, then turn the 3D HDTV on. Try to play your Blu-ray 3D™ movie again.
- Ensure your 3D Blu-ray player's 3D setting is **Enabled/Auto**. (Refer to your player's user guide.)

I cannot return to the Setup App.

- The on-screen menu has guided setup. Press **MENU**, then select **Help > Guided Setup**.
- Remember, any of the TV settings can be adjusted using the on-screen menu. See **Using the On-Screen Menu** in the User Guide.

There are black/gray bars on the top/bottom/sides of the picture.

- Set the TV to Wide or Zoom Mode. Press **MENU**, then select **Wide**.
- Adjust the video settings of your external device (Blu-ray™ or DVD player).
- If using the RGB (computer) input, ensure you are using a supported desktop resolution.
- Some television channels add black bars to the picture.

I cannot access VIZIO Internet Apps, or my Apps are not working correctly.

- Press the **VIA** button on the remote.
- Ensure the TV is connected to your network. See **Connecting to Your Network** in the User Guide.
- Press the Green VIA Shortcut button to display the help screen for an App.

My 3D content is displayed as two separate images.

- Enable SBS (side-by-side) 3D Mode. Press **MENU > 3D > SBS**.

The TV does not respond when I press buttons on the remote control.

- Insert new batteries into the remote.
- Ensure no objects are blocking the TV's sensor. (The sensor is on the front of the TV, in the lower left corner.)
- Activate your remote. See **Activating the Bluetooth Remote Control** in the User's Guide.

The TV displays "No Signal"

- Ensure your connected devices are turned on.
- Press the **INPUT** button on the remote and select the input to which your device is connected (HDMI, Composite, etc).



TRADEMARKS SHOWN ARE THE PROPERTY OF THEIR RESPECTIVE OWNERS. IMAGES USED ARE FOR ILLUSTRATION PURPOSES ONLY. VIZIO, THE V LOGO, WHERE VISION MEETS VALUE, AND OTHER VIZIO TRADEMARKS ARE THE INTELLECTUAL PROPERTY OF VIZIO INC. PRODUCT FEATURES AND SPECIFICATIONS ARE SUBJECT TO CHANGE WITHOUT NOTICE.

© 2010 VIZIO INC. ALL RIGHTS RESERVED.