

SOUND BAR MODELS

TV MODELS

- M65Q7-J01
- M70Q7-J03
- M75Q7-J03
- P65Q9-J01
- P75Q9-J01

V21-H8/V21x-J6

V51-H6/V51x-J6

M215a-J6

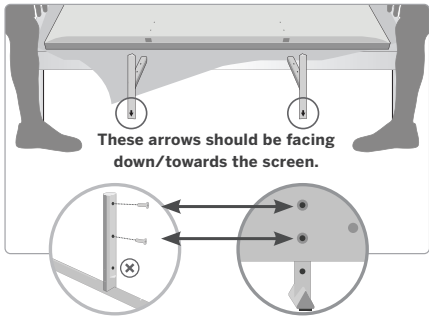
M51a-H6/M51ax-J6

M512a-H6

P514a-H6



- 1** Place TV on a padded, flat surface that is larger than the TV, before installing feet or wallmount (not included).



Use included screws with **top two holes**.

- 2** Unscrew both screws. Keep **smaller screw** for Step 4.

- 3** **Wall mount** the TV. (Mount not included)
-
- Wallmount TV
- Do not let the posts sit on the floor to avoid damage to TV/floor.

- 4** Use the **smaller screw (from Step 2) and smaller screw hole** to attach the bottom stand onto the post.
-
- Front of TV
- IMPORTANT: Make sure the two arrows are facing each other.**

- 5** In Location I
-
- Unscrew the silver screws to use for sound bar brackets (next step).

- 6** Locate your sound bar, mounting brackets, and screw location chart (included with your VIZIO sound bar).
-
- Sound Bar Bracket
- Screw bracket into the correct location for your sound bar. (look underneath your sound bar).

- 7** **IMPORTANT:** Before final sound bar mount, connect all cables (power, HDMI, etc.).
-

- 8** Use the **mounting screws (included with the sound bar)** to attach from the bottom.
-
- Hold sound bar with one hand while screwing in.

Use the **included cable management clips** to make your setup sleek. Make sure the cables are routed **under the TV post** so they don't show.

