



# VIZIO

## INSTALLATION GUIDE

E65-E0

Please read this guide before using the product.

# Safety Information

## IMPORTANT SAFETY INSTRUCTIONS

Your Display is designed and manufactured to operate within defined design limits. Misuse may result in electric shock or fire. To prevent your Display from being damaged, the following instructions should be observed for the installation, use, and maintenance of your Display. Read the following safety instructions before operating your Display. Keep these instructions in a safe place for future reference.

- To reduce the risk of electric shock or component damage, switch off the power before connecting other components to your Display.
- Read these instructions.
- Keep these instructions.
- Heed all warnings.
- Follow all instructions.
- Do not use this apparatus near water.
- Clean only with dry cloth.
- Do not block any ventilation openings. Install in accordance with the manufacturer's instructions.
- Do not install near any heat sources such as radiators, heat registers, stoves, or other apparatus (including amplifiers) that produce heat.
- Do not defeat the safety purpose of the polarized or grounding-type plug. A polarized plug has two blades with one wider than the other. A grounding type plug has two blades and a third grounding prong. The wide blade or the third prong are provided for your safety. If the provided plug does not fit into your outlet, consult an electrician for replacement of the obsolete outlet.
- Protect the power cord from being walked on or pinched particularly at plugs, convenience receptacles, and the point where they exit from the apparatus.
- Only use attachments/accessories specified by the manufacturer.
- Use only with the cart, stand, tripod, bracket, or table specified by the manufacturer, or sold with the apparatus. When a cart is used, use caution when moving the cart/apparatus combination to avoid injury from tip-over.
- Unplug this apparatus during lightning storms or when unused for long periods of time.
- Refer all servicing to qualified service personnel. Servicing is required



when the apparatus has been damaged in any way, such as power-supply cord or plug is damaged, liquid has been spilled or objects have fallen into the apparatus, the apparatus has been exposed to rain or moisture, does not operate normally, or has been dropped.

- Unplug the power cord before cleaning your Display.
- When moving your Display from an area of low temperature to an area of high temperature, condensation may form in the housing. Wait before turning on your Display to avoid causing fire, electric shock, or component damage.
- A distance of at least three feet should be maintained between your Display and any heat source, such as a radiator, heater, oven, amplifier etc. Do not install your Display close to smoke. Operating your Display close to smoke or moisture may cause fire or electric shock.
- Slots and openings in the back and bottom of the cabinet are provided for ventilation. To ensure reliable operation of your Display and to protect it from overheating, be sure these openings are not blocked or covered. Do not place your Display in a bookcase or cabinet unless proper ventilation is provided.
- Never push any object into the slots and openings on your Display cabinet. Do not place any objects on the top of your Display. Doing so could short circuit parts causing a fire or electric shock. Never spill liquids on your Display.
- Your Display should be operated only from the type of power source indicated on the label. If you are not sure of the type of power supplied to your home, consult your dealer or local power company.
- Do not apply pressure or throw objects at your Display. This may compromise the integrity of the Display. The manufacturer's warranty does not cover user abuse or improper installations.
- The power cord must be replaced when using different voltage than the voltage specified. For more information, contact your dealer.
- When connected to a power outlet, power is always flowing into your Display. To totally disconnect power, unplug the power cord.
- The lightning flash with arrowhead symbol within an equilateral triangle is intended to alert the user to the presence of un-isolated, dangerous voltage within the inside of your Display that may be of sufficient magnitude to constitute a risk of electric shock to persons.
- Do not overload power strips and extension cords. Overloading can

result in fire or electric shock.

- The wall socket should be installed near your Display and easily accessible.
- Only power of the marked voltage can be used for your Display. Any other voltage than the specified voltage may cause fire or electric shock.
- Do not touch the power cord during lightning. To avoid electric shock, avoid handling the power cord during electrical storms.
- Unplug your Display during a lightning storm or when it will not be used for long period of time. This will protect your Display from damage due to power surges.
- Do not attempt to repair or service your Display yourself. Opening or removing the back cover may expose you to high voltages, electric shock, and other hazards. If repair is required, contact your dealer and refer all servicing to qualified service personnel.
- **WARNING:** Keep your Display away from moisture. Do not expose your Display to rain or moisture. If water penetrates into your Display, unplug the power cord and contact your dealer. Continuous use in this case may result in fire or electric shock.
- Do not use your Display if any abnormality occurs. If any smoke or odor becomes apparent, unplug the power cord and contact your dealer immediately. Do not try to repair your Display yourself.
- Avoid using dropped or damaged appliances. If your Display is dropped and the housing is damaged, the internal components may function abnormally. Unplug the power cord immediately and contact your dealer for repair. Continued use of your Display may cause fire or electric shock.
- Do not install your Display in an area with heavy dust or high humidity. Operating your Display in environments with heavy dust or high humidity may cause fire or electric shock.
- Follow instructions for moving your Display. Ensure that the power cord and any other cables are unplugged before moving your Display.
- When unplugging your Display, hold the AC/DC power adapter, not the cord. Pulling on the power cord may damage the wires inside the cord and cause fire or electric shock. When your Display will not be used for an extended period of time, unplug the power cord.
- To reduce risk of electric shock, do not touch the connector with wet hands.
- Insert batteries in accordance with instructions. Incorrect polarities may cause the batteries to leak which can damage the remote control or injure the operator. Do not expose batteries to excessive heat such as sunshine, fire or the like.

- If any of the following occurs, contact the dealer:
  - The power cord fails or frays.
  - Liquid sprays or any object drops into your Display.
  - Your Display is exposed to rain or other moisture.
  - Your Display is dropped or damaged in any way.
  - The performance of your Display changes substantially.
- This apparatus shall not be exposed to dripping or splashing and no objects filled with liquids, such as vases, shall be placed on the apparatus.
- The mains plug or appliance coupler is used as the disconnect device, the disconnect device shall remain readily operable.
- **CAUTION** - These servicing instructions are for use by qualified service personnel only. To reduce the risk of electric shock, do not perform any servicing other than that contained in the operating instructions unless you are qualified to do so.
- The lightning flash with arrowhead symbol within an equilateral triangle is intended to alert the user to the presence of uninsulated **DANGEROUS VOLTAGE** within the product's enclosure that may be of sufficient magnitude to constitute a risk of electrical shock to persons.
- Please use caution around the Display; pulling or pushing on the Display may cause the Display to tip or fall over resulting in personal injury and/or property damage.
- **WARNING:** Exposure to loud sounds can damage your hearing causing hearing loss and tinnitus (ringing or buzzing
- in the ears). With continued exposure to loud noises, ears may become accustomed to the sound level, which may
- result in permanent damage to hearing without any noticeable discomfort.
- Install the Display where it cannot be pulled, pushed or knocked over.
- Do not allow children to hang onto the product.
- Store the accessories (remote, batteries, etc.) in a location safely out of the reach of children.
- The American Academy of Pediatrics discourages television viewing for children younger than two years of age.



# Table of Contents

Package Contents .....	5
This is your basic remote.....	8
Inserting and replacing batteries. ....	9
Using your smartphone or tablet as a remote.....	10
Minimum Recommended Requirements. ....	11
Installing the Display Stands .....	12
First-Time Setup.....	14
Pairing your mobile device .....	18
Pairing Via Wi-Fi .....	19
Getting started with Google Cast.....	20
How to cast content.....	21
Getting started with the VIZIO SmartCast app .....	22
Account Setup .....	22
Selecting a Cast device .....	23
Basic Display functions.....	24
Category Pages.....	25
Wall-mounting the Display .....	26
Additional connections .....	28
Connecting an audio device.....	28
Regulatory Information - E-Series Display .....	31
Limited Warranty.....	32
Legal Information .....	34

# Package Contents



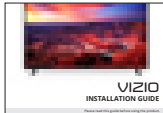
Home Theater  
Display



Display  
Stands



4 x Phillips  
Screws



Multi-Language  
Installation Guide



Basic Remote  
w/Batteries



Power  
Cable



# Welcome to VIZIO SmartCast™!

Your new VIZIO SmartCast Display is part of the all-new collection of home theater displays, sound bars and home audio speakers that can all be controlled by one ingenious app: the VIZIO SmartCast app.

With the app, you can browse movies, TV shows, music and more from multiple sources or apps in one view, without having to switch back and forth between those apps or sources. And then just tap to cast the content to your VIZIO TV - from anywhere in your home. It works over WiFi, so you can control your VIZIO TV from any room, and keep using your device to continue browsing, play games, text or even watch another show, without disrupting what's playing on your TV. With VIZIO SmartCast, what you love doesn't change, but how you experience it will never be the same.

Now let's get you into setup so you can start casting!

# This is your basic remote

## **POWER**

Turn the Display on or off.

## **LINK**

Activate pairing mode on Display.

## **VOLUME**

Increase or decrease the loudness of the audio.

## **MUTE**

Turn the audio on or off.



## **INPUT**

Change the currently displayed input.

## **WIDE**

Cycle through the different ratio modes.

## **CHANNEL UP/DOWN**

Change the channel.

## **PIC**

Cycles through the different picture setting modes.



## Inserting and replacing batteries.

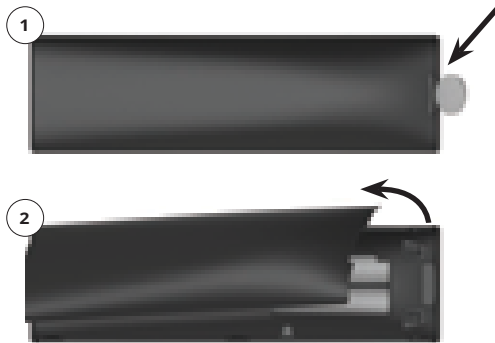
Two AAA batteries are included for you to use with the basic remote control.

To insert/replace the batteries:

1. Find the notch on the back of the remote. Insert a coin and pry open the back cover.
2. Remove the back cover and insert two AAA batteries (included). Be sure to align the + and - signs on the batteries and remote.



Visit <http://support.vizio.com/> if you have any questions.



**WARNING:** keep the remote control batteries away from children. It may cause choking and/or lead to a fire or chemical burn if mishandled. Do not dispose of batteries in fire. Replace only with batteries of the correct type.



When needed, VIZIO recommends replacing the batteries that came with this remote with two, new Duracell 'AAA' alkaline batteries.

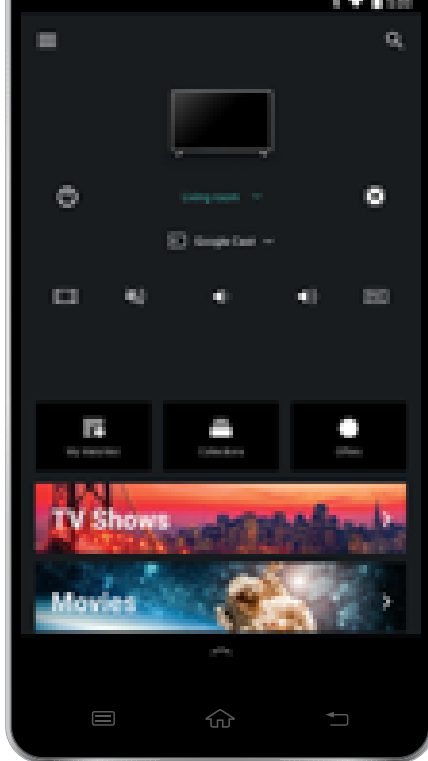
**POWER UP WITH  
DURACELL®**

# Using your smartphone or tablet as a remote.

Your VIZIO Home Theater Display brings the way you interact up to speed with the rest of your entertainment experience. Using just your smart phone or tablet, you can tap, swipe, or use voice controls to access a virtually limitless library of casting content.

To use your smartphone or tablet as your SmartCast Remote:

- Download the VIZIO SmartCast on your compatible mobile device and follow the on-screen instructions to pair your device with a VIZIO Home Theater Display.



\*Device NOT included

## Minimum Recommended Requirements.

### Android\*

- Android 4.0 or later\*\*
- RAM: 1.5gb or more
- Storage: 8GB or more
- Networking: Wi-Fi
- Countries: US, Canada & Mexico

For a list of supported devices, see Google Play's Supported Devices article.

### iOS\*

- iOS 8.0 or later
- Countries: US, Canada & Mexico
- Devices supported: iPhone, iPad



The VIZIO SmartCast app is available for download from the Google Play Store and Apple App Store.

\*Subject to change

\*\*To use the Bluetooth LE functionality you must have Android 5.1 or later

# Installing the Display Stands

## 1

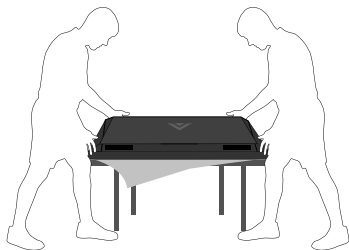
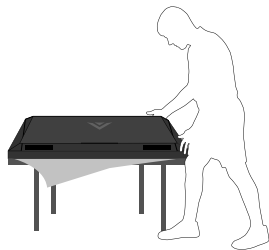


It is recommended that **two** people take part in the stand installation.

Remove any plastic film from the Home Theater Display and stands.

Place the Display screen-down on a clean, flat surface. To prevent scratches or damage to the screen, place the Display on a soft surface such as a carpet, rug, or blanket, and avoid any sharp edges.

Make sure the top and bottom edges of the screen are being supported by the surface to avoid damage.



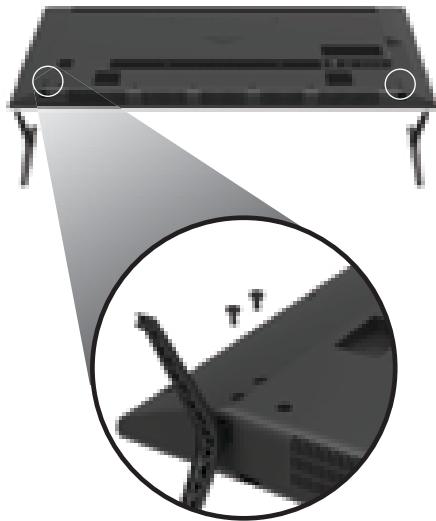
## 2

Insert the stands into the base of the Display. (The stands are identical.)

Secure each stand to the Display with two (2) Phillips screws (included).

Insert the screws into the back of the Display and tighten them using a Phillips screwdriver.

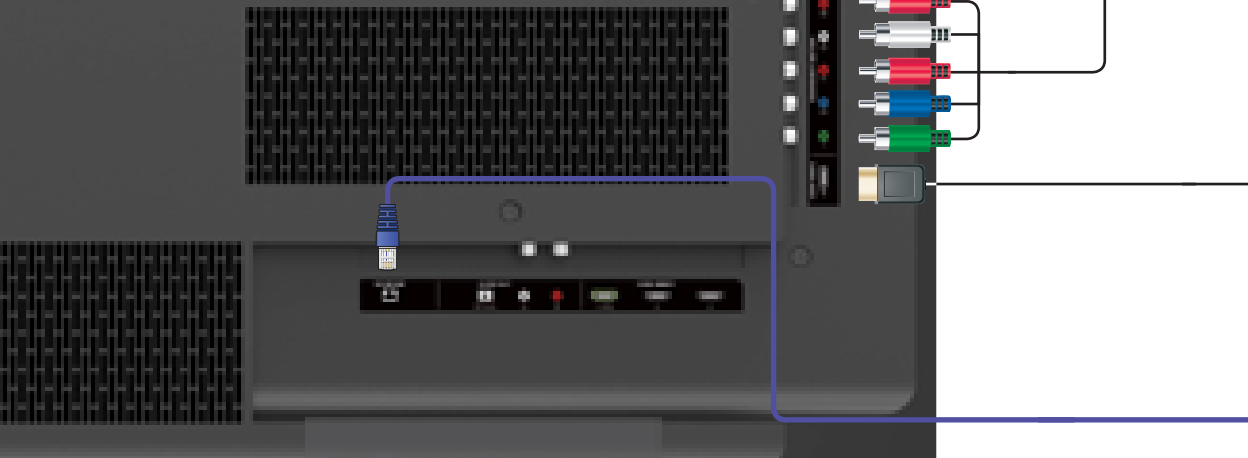
When you are finished, place the Display on a stable, level surface.



Note: The image shown here is for illustrative purposes only and may be subject to change.  
The actual number of ports and their locations may vary, depending on the model.

# First-Time Setup

- 1 Connect all of your devices to the Display first.  
Choose **ONE** connection type for each device.

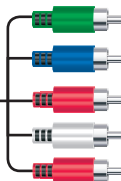


Note: The image shown here is for illustrative purposes only and may be subject to change.  
The actual number of ports and their locations may vary, depending on the model.

TV tuner and antenna required for over-the-air TV (Sold separately)

## COMPONENT CABLE

- ANALOG
- HD VIDEO (1080p)
- STEREO AUDIO



## HDMI CABLE (HDMI 1-4)

- DIGITAL
- HD VIDEO
- HD AUDIO



## INTERNET CONNECTION

- HIGH-SPEED INTERNET CONNECTION
- LATEST CONTENT



## Common Devices



Cable or  
Satellite Receiver



Blu-Ray Player



Gaming Console



High Performance  
Gaming PC

## Google Cast

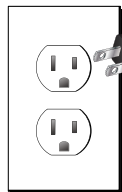
Instant access to Movies, TV  
Shows, Music, and more.

For the best experience, VIZIO recommends using an Ethernet cable. However, your Display also has built-in Wi-Fi. See connecting to the internet with Wi-Fi section for more information.

## 2

Connect one end of the power cable to the back of the Display. The flat edge of the connector faces the outer edge of the Display.

Plug the other end of the power cord into an electrical outlet. The Display powers on automatically.





# 3

Pair your mobile device with the your VIZIO Display using the VIZIO Smart Cast app

Browse content by genre across multiple apps at once, then just tap to cast to the big screen!

VIZIO SmartCast app also allows you to access and edit Display Settings from your device.



Install the VIZIO SmartCast app on your mobile device prior to powering your Display for the first time.



\*Device NOT included.

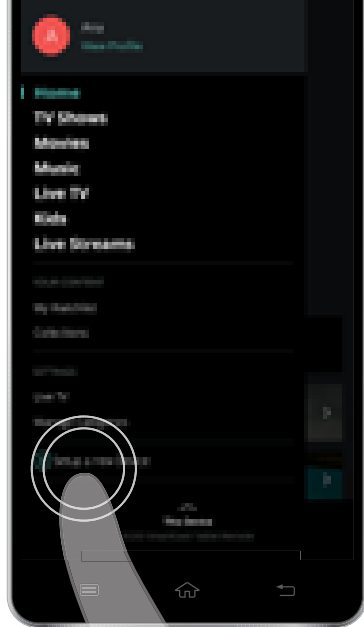
# Pairing your mobile device

To pair your mobile device:

1. Launch the VIZIO SmartCast app on your mobile device and press the **Power** button on the basic remote or on the back of the Display to power on the Display.
2. From the VIZIO SmartCast app, tap on the  button in the top left corner. The side menu is displayed.
3. Tap **Setup a new Device** from the list of options.

The setup wizard appears and describes how to pair your mobile device with the E-Series Display.

Hold your mobile device close to the VIZIO logo on the bottom right corner of the Display for at least 5 seconds to pair it with the E-Series Display. Follow the on screen instructions to finish the setup wizard.



## Pairing Via Wi-Fi

If your device is not bluetooth enabled or you are having trouble pairing, connect to your Home Theater Display through the local Wi-Fi network.

To pair through a Wi-Fi network:

1. Tap **Connect Via Wi-Fi** from the SmartCast App's pairing screen
2. Look for your Home Theater Display name on the list of discovered devices and tap to select.

Follow the on screen instructions to finish the setup wizard.



Your VIZIO Home Theater Display name is displayed on the screen during the setup process. Look for a name such as *Cast1234*.



# Getting started with Google Cast.

With Google Cast built-in, you can access over 200,000 TV shows and movies from mobile apps you already know and love. By simply tapping the Cast button on your favorite mobile apps, easily watch content go from your mobile screen to the big screen.




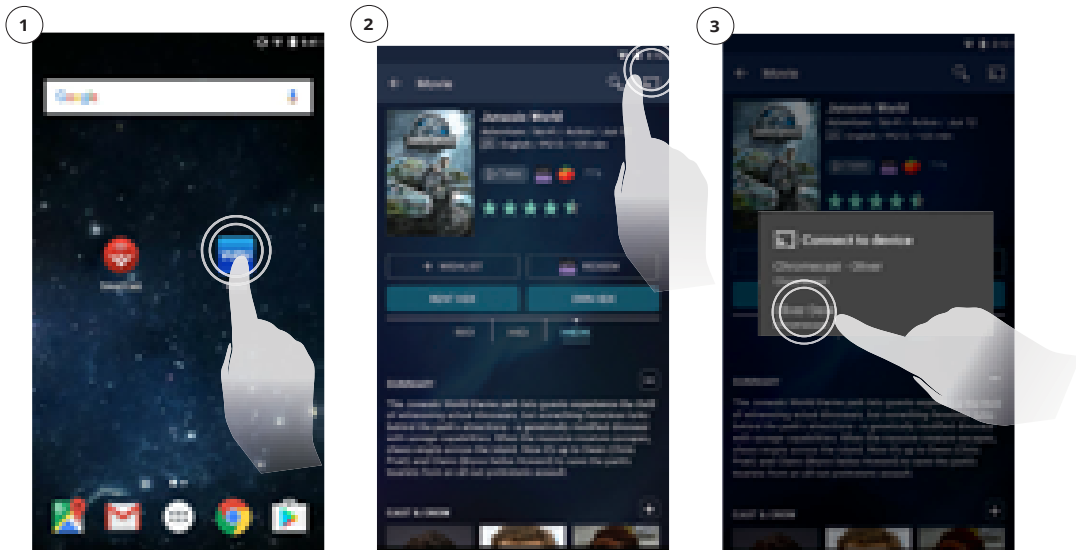
Jurassic World now available on VUDU.  
© 2015 Universal Studios. Rated PG-13.

## How to cast content

Streaming content to your E-Series Display is as simple as tapping an icon on your favorite app.

To cast content to your E-Series Display:

1. Open any cast compatible app.
2. Select the content you'd like to cast and tap the  icon on the upper left hand side of the app screen.
3. Select the device you'd like to cast to and press play.



# Getting started with the VIZIO SmartCast app

The VIZIO SmartCast app lets you wirelessly cast your favorite movies, shows, music and more to your E-Series Home Theater Display. The app allows you to search for content and control cast playback across your favorite apps.



The VIZIO SmartCast app is available for download from the Google Play Store and Apple App Store.

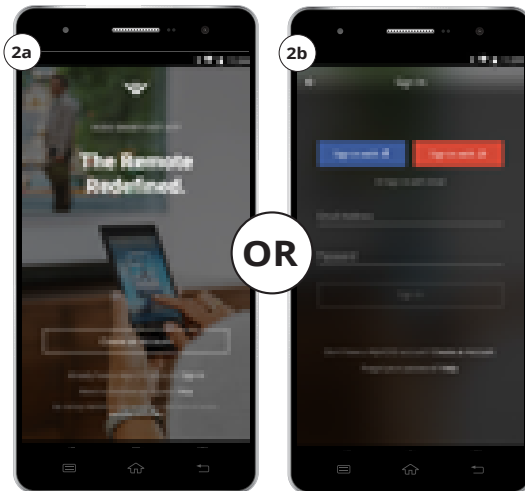
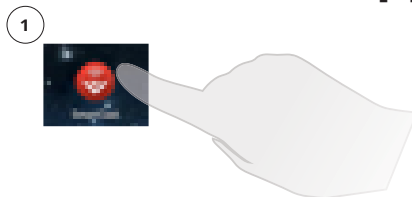
## Account Setup

You will need to log into your MyVIZIO account to take full advantage of VIZIO SmartCast. If you do not have an account, you can sign up for a free account.

1. Tap on the VIZIO SmartCast to begin.
2. a) Tap the **Create an Account** button to sign up for a MyVIZIO account.

**OR**

b) If you already have an account, tap **Sign In** below the **Create an Account** button to log into your account.

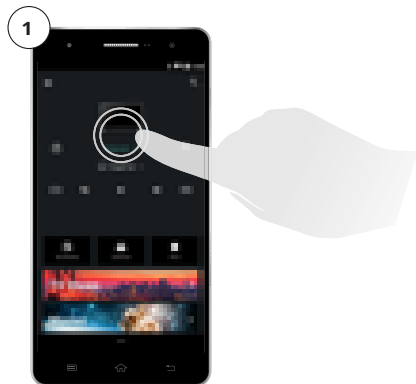


## Selecting a Cast device

Your device remote can be paired with multiple cast-enabled devices, allowing you to seamlessly access your content where ever you are.

To select a different cast device:

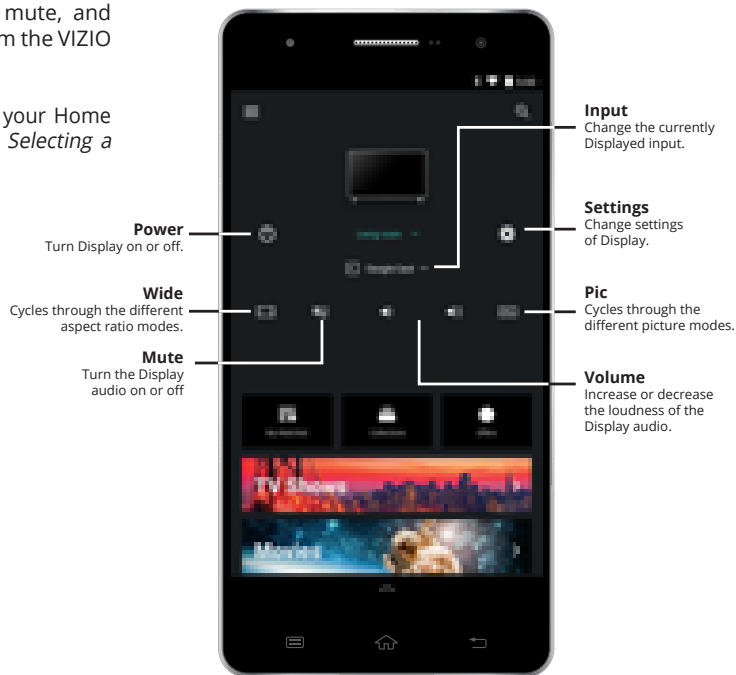
1. On the Home category page, tap **This Device**. The device selection screen Displays.
2. Tap the device you want to begin casting to. Make sure the other device is a cast-enabled device and turned on.



## Basic Display functions.

You can turn on/off, change the input, mute, and adjust the volume of your Display right from the VIZIO SmartCast app.

To access the basic functions, make sure your Home Theater Display is selected. If it is not, see *Selecting a Cast device*.






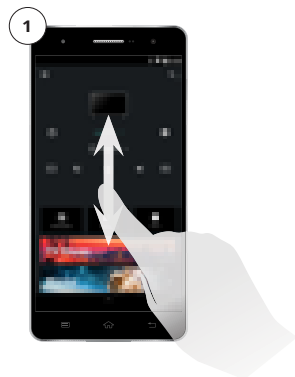
## Category Pages

The VIZIO app categorizes video content into different pages in the app. The pages are organized as:

- **TV Shows** - Popular, recently added, recommended, and highly rated Display shows.
- **Movies** - Popular, recently added, recommended, Free, and highly rated movies.
- **Music** - Popular music videos and radio stations.
- **Live TV** - My favorite channels, currently playing TV shows and movies.
- **Kids** - Movies and Display shows for kids.
- **Live Streams** - Popular, TV shows, stations, and extreme sports streaming stations.

To access the different pages:

- From the Home page, Swipe **Up** or **Down** to access the different category pages. You can also access these pages by pressing the  button in the top left corner.



# Wall-mounting the Display

To mount your Display on a wall, you will need a wall mount. Consult the information on this page to find the appropriate mount for your Display.



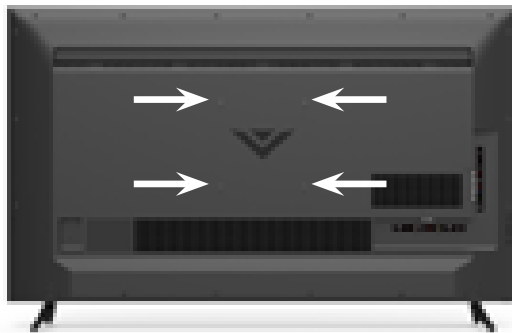
Installing a Display on a wall requires lifting. To prevent injury or damage to the Display, ask someone to help you.

Be sure the mount you choose is capable of supporting the weight of the Display. After you have determined that you have the correct mount for your Display, you can begin the installation.

To install your Display on a wall:

1. Disconnect any cables connected to your Display.
2. Place the Display face-down on a clean, flat, stable surface. Be sure the surface is clear of debris that can scratch or damage the Display.
3. Remove the stands by loosening and removing the screws.
4. Attach your Display and wall mount to the wall, carefully following the instructions that came with your mount. Use only with a UL-listed wall mount bracket rated for the weight/load of this Display.

E65-E0	
Screw Size:	M6
Hole Pattern:	400 mm (V) x 400 mm (H)
Weight w/o Stand:	50.72 lb (23.00 kg)



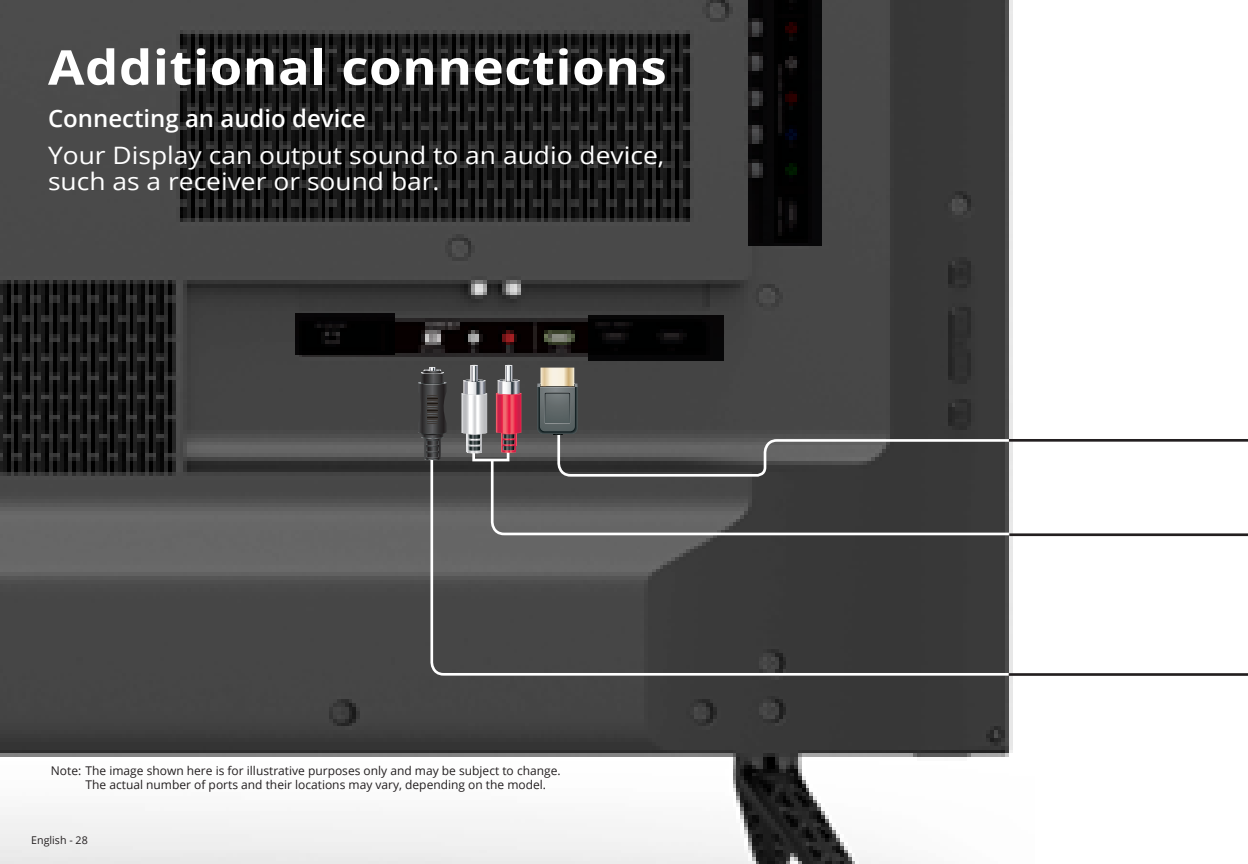
Wall-mount screw locations.

Note: The image shown here is for illustrative purposes only and may be subject to change. The actual number of ports and their locations may vary, depending on the model.

# Additional connections

## Connecting an audio device

Your Display can output sound to an audio device, such as a receiver or sound bar.



Note: The image shown here is for illustrative purposes only and may be subject to change.  
The actual number of ports and their locations may vary, depending on the model.

To connect your Display to an audio device:

1. Verify that your device has a video port that matches an available port on the Display (HDMI, 3.5mm, etc.)
2. Turn the Display and your audio device off.
3. Connect the appropriate cable (not included) to the Display and the device.
4. Turn the Display and your device on.

### HDMI CABLE

- CEC 2-WAY COMMUNICATION
- 2.0 - 5.1 DIGITAL AUDIO
- PCM, DTS, DOLBY DIGITAL



### RCA CABLE

- ANALOG STEREO CONNECTION
- 2.0 CHANNEL



### DIGITAL OPTICAL CABLE

- 2.0 - 5.1 DIGITAL AUDIO
- PCM, DTS, DOLBY DIGITAL



Sound bar system



Audio Receiver



# NEED HELP?

Go to: [support.vizio.com](https://support.vizio.com)

## Find help with:

- New product setup
- Connecting your devices
- Technical problems
- Product updates and more



Live chat  
support available

You can also contact our  
popular support team at:

Phone: (877) 698-4946 (toll-free)

## Hours of Operation:

Monday - Friday: 7 AM TO 11 PM (CST)  
Saturday - Sunday: 9 AM TO 6 PM (CST)

Se habla Español • Nous parlons Français



# Regulatory Information - E-Series Display

## FCC Class B Radio Interference Statement

NOTE: This equipment has been tested and found to comply with the limits for a Class B digital device, pursuant to Part 15 of the FCC Rules. These limits are designed to provide reasonable protection against harmful interference in a residential installation. This equipment generates, uses and can radiate radio frequency energy, and if not installed and used in accordance with the instructions, may cause harmful interference to radio communications. However, there is no guarantee that interference will not occur in a particular installation. If this equipment does cause harmful interference to radio or television reception, which can be determined by turning the equipment off and on, the user is encouraged to try to correct the interference by one or more of the following measures:

- Reorient or relocate the receiving antenna.
- Increase the separation between the equipment and receiver.
- Connect the equipment into an outlet on a circuit different from that to which the receiver is connected.
- Consult the dealer or an experienced radio/Display technician for help.

This device complies with Part 15 of the FCC Rules. Operation is subject to the following two conditions: (1) this device may not cause harmful interference, and (2) this device must accept any interference received, including interference that may cause undesired operation.

## Notice

The changes or modifications not expressly approved by the party responsible for compliance could void the user's authority to operate the equipment.

Shielded interface cables and AC power cord, if any, must be used in order to comply with the emission limits.

The manufacturer is not responsible for any radio or Display interference caused by unauthorized modification to this equipment. It is the responsibilities of the user to correct such interference.

## FCC Warning

Changes or modifications not expressly approved by the party responsible for compliance with the FCC Rules could void the user's authority to operate this equipment.

## Caution

Always use an AC/DC power adapter that is properly grounded.

## Canada Notice for License-Exempt Radio Apparatus

This device complies with Industry Canada's license-exempt RSSs. Operation is subject to the following two conditions: (1) This device may not cause harmful interference, and (2) this device must accept any interference received, including interference that may cause undesired operation.

This device operates on a no-protection no-interference basis. Should the user seek to obtain protection from other radio services operating in the same Display bands, a radio license is required. Please consult Industry Canada's document CPC-2-1-28, Optional Licensing for Low-Power Radio Apparatus in the Display Bands, for details.

Cet appareil est conforme aux CNR exempts de licence d'Industrie Canada. . Son fonctionnement est sujet aux deux conditions suivantes:

1. le dispositif ne doit pas produire de brouillage préjudiciable, et
2. ce dispositif doit accepter tout brouillage reçu, y compris un brouillage susceptible de provoquer un fonctionnement indésirable

Cet appareil fonctionne sur une base sans protection et sans interférence. Dans le cas où l'utilisateur cherche à obtenir de la protection des autres services de radio fonctionnant sur les mêmes bandes Display, aucune licence est requise. Veuillez consulter le document CPC-2-1-28 d'Industrie Canada, License optionnelle pour les appareils radio de faible puissance, pour plus de détails.

Industry Canada Class B emission compliance statement

This Class B digital apparatus complies with Canadian ICES-003. Cet appareil numérique de la classe B est conforme à la norme NMB-003 du Canada.

## Declaración de México:

La operación de este equipo está sujeta a las siguientes dos condiciones: (1) es posible que este equipo o dispositivo no cause interferencia perjudicial y (2) este equipo o dispositivo debe aceptar cualquier interferencia, incluyendo la que pueda causar su operación no deseada.

# Limited Warranty

## UNITED STATES AND CANADA

BY USING YOUR VIZIO PRODUCT YOU AGREE TO BE BOUND BY ALL THE TERMS OF THIS WARRANTY. BEFORE USING YOUR VIZIO PRODUCT, PLEASE READ THIS WARRANTY CAREFULLY. IF YOU DO NOT AGREE TO THE TERMS OF THIS WARRANTY, DO NOT USE THE VIZIO PRODUCT AND, WITHIN THIRTY (30) DAYS OF THE DATE OF PURCHASE, RETURN IT FOR A REFUND TO THE AUTHORIZED RETAILER WHERE YOU PURCHASED IT.

This warranty contains a binding arbitration agreement and a class action waiver for United States residents. If you live in the United States, the binding arbitration agreement and class action waiver affect your rights under this warranty. Please read the text under the section titled "Binding Arbitration Agreement; Class Action Waiver (U.S. Residents Only)" carefully.

## How Long This Warranty Lasts

For non-commercial use, VIZIO warrants the product on the terms set forth below for one (1) year from the date of original purchase. For commercial use, VIZIO warrants this product on the terms set forth below for ninety (90) days from the date of original purchase.

## What This Warranty Covers

VIZIO warrants the product against defects in materials and workmanship when the product is used normally in accordance with VIZIO's user guides and manuals. Except where restricted by law, this warranty applies only to the original purchaser of a new product. The purchase must have been made from an authorized retailer in the United States (including Puerto Rico) or Canada. The product must also be located in the country where it was purchased at the time of warranty service.

## Zero Bright Pixel Defect Guarantee (Displays Only)

Your product may qualify for a warranty against "zero bright pixel" defects for the duration of the warranty on select new product purchases. To determine if this guarantee applies to your product, refer to the model's product information page at [www.vizio.com](http://www.vizio.com), look for the "zero bright pixel" guarantee on the box, or contact VIZIO Technical Support at the email address or telephone number below.

## How to Get Service

Before obtaining warranty service, you may visit [www.vizio.com](http://www.vizio.com) for additional help and troubleshooting. To obtain warranty service, contact VIZIO Technical Support via email at [TechSupport@VIZIO.com](mailto:TechSupport@VIZIO.com) or via phone at 877 MY VIZIO (877-698-4946). The VIZIO Technical Support hours are 6:00AM to 9:00PM Monday through Friday and 7:00AM to 4:00PM Saturday and Sunday, Pacific Time.

## Your Obligations Before Service

You must obtain pre-authorization before sending your product to a VIZIO service center. You may be required to supply a purchase receipt (or copy) to show that the product is within the warranty period. When you return a product to a VIZIO service center, you must ship the product in its



original packaging or in packaging that affords an equal degree of protection. VIZIO Technical Support will provide instructions for packing and shipping the product to the VIZIO service center.

ALL USER DATA AND DOWNLOADED APPLICATIONS STORED ON A PRODUCT WILL BE DELETED IN THE COURSE OF SOME IN-HOME AND ALL SHIP-IN WARRANTY SERVICE. If this occurs, your product will be restored to its original state. You will be responsible for restoring all applicable user data and downloaded applications. Recovery and reinstallation of user data and downloaded applications is not covered under this warranty. In order to protect your personal information, VIZIO recommends that you always clear all personal information from the product before it is serviced, regardless of the servicer.

### **VIZIO's Responsibilities**

If VIZIO determines that a product is covered by this warranty, VIZIO will (at its option) repair or replace it, or refund the purchase price to you. There will be no charge for parts or labor during the warranty period. Replacement parts may be new or recertified at VIZIO's option and sole discretion. Replacement parts and VIZIO's labor are warranted for the remaining portion of the original warranty or for ninety (90) days from warranty service, whichever is longer.

### **Types of Service**

Displays that are 32 inches or larger will usually be serviced in-home. In-home service requires complete and easy access to the product and does not include de-installation or re-installation of the product. In-home service is subject to availability. VIZIO will provide other service options when in-home service is not available.

All other VIZIO products must be sent to a VIZIO service center to obtain warranty service. VIZIO is not responsible for transportation costs to the service center, but VIZIO will cover return shipping to the customer.

### **What This Warranty Does Not Cover**

This warranty does not cover: (a) cosmetic damage; (b) normal wear and tear; (c) improper operation; (d) improper voltage supply or power surges; (e) signal issues; (f) damage from shipping; (g) acts of God; (h) customer misuse, modifications or adjustments; (i) installation, set-up, or repairs attempted by anyone other than by a VIZIO authorized service center; (j) products with unreadable or removed serial numbers; (k) products requiring routine maintenance; or (l) products sold "AS IS", "CLEARANCE", "FACTORY RECERTIFIED", or by a non-authorized reseller.

### **What to Do If You Are Not Satisfied With Service**

If you feel VIZIO has not met its obligations under this warranty, you may attempt to resolve the issue informally with VIZIO. If you are unable to resolve the issue informally and wish to file a formal claim against VIZIO, and if you are a resident of the United States, you must submit your claim to binding arbitration according to the procedures described below, unless an exception applies. Submitting a claim to binding arbitration means that you do not have the right to have your claim heard by a judge or jury. Instead your claim will be heard by a neutral arbitrator.

### **Binding Arbitration Agreement; Class Action Waiver (U.S. Residents Only)**

UNLESS YOU HAVE BROUGHT AN ELIGIBLE CLAIM IN SMALL CLAIMS COURT OR HAVE

OPTED OUT AS DESCRIBED BELOW, ANY CONTROVERSY OR CLAIM RELATING IN ANY WAY TO YOUR VIZIO PRODUCT, INCLUDING ANY CONTROVERSY OR CLAIM ARISING OUT OF OR RELATING TO THIS WARRANTY, A BREACH OF THIS WARRANTY, OR THE VIZIO PRODUCTS SALE, CONDITION OR PERFORMANCE, WILL BE SETTLED BY BINDING ARBITRATION ADMINISTERED BY THE AMERICAN ARBITRATION ASSOCIATION AND CONDUCTED BY A SINGLE ARBITRATOR APPOINTED BY THE AMERICAN ARBITRATION ASSOCIATION, IN ACCORDANCE WITH ITS COMMERCIAL ARBITRATION RULES AND ITS SUPPLEMENTARY PROCEDURES FOR CONSUMER-RELATED DISPUTES. You may learn more about the American Arbitration Association and its rules for arbitration by visiting [www.adr.org](http://www.adr.org) or by calling 800-778-7879. Since this warranty concerns a transaction in interstate or international commerce, the Federal Arbitration Act will apply.

The filing fees to begin and carry out arbitration will be shared between you and VIZIO, but in no event will your fees ever exceed the amount allowable by the American Arbitration Association, at which point VIZIO will cover all additional administrative fees and expenses. VIZIO waives its right to recover attorneys' fees in connection with any arbitration under this warranty. If you are the prevailing party in an arbitration to which the Supplementary Procedures for Consumer-Related Disputes applies, then you are entitled to recover attorneys' fees as the arbitrator may determine.

The dispute will be governed by the laws of the state or territory in which you resided at the time of your purchase (if in the United States). The place of arbitration will be Irvine, California, or your county of residence (if in the United States). The arbitrator will have no authority to award punitive or other damages not measured by the prevailing party's actual damages, except as may be required by statute. The arbitrator will not award consequential damages, and any award will be limited to monetary damages and will include no equitable relief, injunction, or direction to any party other than the direction to pay a monetary amount. Judgment on the award rendered by the arbitrator will be binding and final, except for any right of appeal provided by the Federal Arbitration Act, and may be entered in any court having jurisdiction. Except as may be required by law, neither you nor VIZIO nor an arbitrator may disclose the existence, content, or results of any arbitration under this warranty without the prior written consent of you and VIZIO.

ANY DISPUTE, WHETHER IN ARBITRATION, IN COURT, OR OTHERWISE, WILL BE CONDUCTED SOLELY ON AN INDIVIDUAL BASIS. VIZIO AND YOU AGREE THAT NO PARTY WILL HAVE THE RIGHT OR AUTHORITY FOR ANY DISPUTE TO BE ARBITRATED AS A CLASS ACTION, A PRIVATE ATTORNEY GENERAL ACTION, OR IN ANY OTHER PROCEEDING IN WHICH EITHER PARTY ACTS OR PROPOSES TO ACT IN A REPRESENTATIVE CAPACITY.

NO ARBITRATION OR PROCEEDING WILL BE JOINED, CONSOLIDATED, OR COMBINED WITH ANOTHER ARBITRATION OR PROCEEDING WITHOUT THE PRIOR WRITTEN CONSENT OF ALL PARTIES TO ANY SUCH ARBITRATION OR PROCEEDING.

Exceptions to Binding Arbitration Agreement and Class Action Waiver

IF YOU DO NOT WISH TO BE BOUND BY THE BINDING ARBITRATION AGREEMENT AND CLASS ACTION WAIVER, THEN: (1) you must notify VIZIO in writing within sixty (60) days of the date that you purchased the product; (2) your written notification must be mailed to VIZIO at 39 Tesla, Irvine, CA 92618, Attn: Legal Department; and (3) your written notification must include (a) your name, (b) your address, (c) the date you purchased the product, and (d) a clear statement that you wish to opt out of the binding arbitration agreement and class action waiver.

In addition, you may pursue a claim in small claims court in your county of residence (if in the United States) or in Orange County, California. In such case the provisions of the section

titled "Binding Arbitration Agreement; Class Action Waiver (U.S. Residents)" will not apply.

#### **Exclusions and Limitations**

TO THE GREATEST EXTENT PERMITTED BY APPLICABLE LAW, THERE ARE NO EXPRESS WARRANTIES OTHER THAN THOSE DESCRIBED ABOVE. ANY IMPLIED WARRANTIES, INCLUDING ANY IMPLIED WARRANTY OF MERCHANTABILITY AND FITNESS FOR A PARTICULAR PURPOSE, WILL BE LIMITED IN DURATION TO THE WARRANTY PERIOD SET FORTH ABOVE. SOME STATES AND PROVINCES DO NOT ALLOW LIMITATIONS ON HOW LONG AN IMPLIED WARRANTY LASTS, SO THE ABOVE LIMITATION MAY NOT APPLY TO YOU. VIZIO WILL NOT BE RESPONSIBLE FOR LOSS OF USE, LOSS OF INFORMATION OR DATA, COMMERCIAL LOSS, LOST REVENUE OR LOST PROFITS, OR OTHER INDIRECT, SPECIAL, INCIDENTAL OR CONSEQUENTIAL DAMAGES, EVEN IF VIZIO HAS BEEN ADVISED OF THE POSSIBILITY OF SUCH DAMAGES, AND EVEN IF THE REMEDY FAILS OF ITS ESSENTIAL PURPOSE. SOME STATES AND PROVINCES DO NOT ALLOW THE EXCLUSION OR LIMITATION OF INCIDENTAL OR CONSEQUENTIAL DAMAGES, SO THE ABOVE LIMITATION OR EXCLUSION MAY NOT APPLY TO YOU.

IN LIEU OF ANY OTHER REMEDY FOR ANY AND ALL LOSSES AND DAMAGES RESULTING FROM ANY CAUSE WHATSOEVER (INCLUDING VIZIO'S NEGLIGENCE, ALLEGED DAMAGE, OR DEFECTIVE GOODS, NO MATTER WHETHER SUCH DEFECTS ARE DISCOVERABLE OR LATENT), VIZIO MAY, AT ITS SOLE AND EXCLUSIVE OPTION AND IN ITS DISCRETION, REPAIR OR REPLACE YOUR PRODUCT, OR REFUND ITS PURCHASE PRICE. AS NOTED, SOME STATES AND PROVINCES DO NOT ALLOW THE EXCLUSION OR LIMITATION OF INCIDENTAL OR CONSEQUENTIAL DAMAGES, SO THE ABOVE LIMITATION OR EXCLUSION MAY NOT APPLY TO YOU.

#### **How the Law Applies**

This warranty gives you specific legal rights, and you may also have other rights, which vary from state to state and province to province. This warranty applies to the greatest extent permitted by applicable law.

#### **General**

No employee or agent of VIZIO may modify this warranty. If any term of this warranty, other than the class action waiver, is found to be unenforceable, that term will be severed from this warranty and all other terms will remain in effect. If the class action waiver is found to be unenforceable, then the entire section titled "Binding Arbitration Agreement; Class Action Waiver (U.S. Residents Only)" will not apply. This warranty applies to the maximum extent not prohibited by law.

#### **Changes to Warranty**

This warranty may change without notice, but any change will not affect your original warranty. Check [www.vizio.com](http://www.vizio.com) for the most current version.

# Legal Information

#### **Software Licenses**

All software is provided subject to a software license agreement(s) and you agree that you will be bound by such license agreement(s) in addition to these terms. Your use of this product is subject to VIZIO's privacy policy, which may be updated from time to time, and is available to view at <http://www.vizio.com/privacy>.

#### **Export Regulations**

Customer acknowledges that the VIZIO products, which include technology and software, are subject to customs and export control laws in the United States ("US"). The products may also be subject to the customs and export control laws and regulations of the country in which the products are manufactured and/or received.

#### **Internet Connectivity**

Network conditions, environmental and other factors may negatively affect connectivity and the resulting video quality, if any.

The applications and content of the applications pictured herein or described in accompanying documentation may only be available in certain countries or languages, may require additional fees or subscription charges, and may be subject to future updates, modifications or discontinuation without notice. VIZIO has no control over third party applications or content and assumes no responsibility for the availability or interruption of such applications or content. Additional third party terms, conditions and restrictions apply. A Google account is required to download applications from the Google Play store. A MyVIZIO account is required to access certain features of the VIZIO SmartCast app.

Information in this Quick Start Guide is subject to change without notice. To review the most updated version of this Quick Start Guide and the associated User Manual, go to <http://www.vizio.com>.

© 2016 VIZIO, Inc. All Right Reserved.

This Quick Start Guide may not be copied in whole or in part without the written permission of VIZIO, Inc. VIZIO, Inc. has made reasonable efforts to ensure the accuracy of the information provided herein. All product specifications, functionality, features, configurations, performance, design and other product information described herein are subject to change without notice. VIZIO, Inc. is not responsible for typographical, technical, or descriptive errors.

VIZIO, the VIZIO logo, the V logo, and other terms and phrases are trademarks or registered trademarks of VIZIO, Inc.

HDMI, HDMI High-Definition Multimedia Interface, and the HDMI Logo are trademarks or registered trademarks of HDMI Licensing LLC.

The Bluetooth® word mark and logos are registered trademarks owned by Bluetooth SIG, Inc. Used under license.

For DTS patents, see <http://patents.dts.com>. Manufactured under license from DTS Licensing Limited. DTS, the Symbol, & DTS and the Symbol together are registered trademarks, and DTS Studio Sound is a trademark of DTS, Inc. © DTS, Inc. All Rights Reserved.

Dolby and the double-D symbol are registered trademarks of Dolby Laboratories.

© 2016 Google Inc. All rights reserved. Google Cast is a trademark of Google Inc.

Other names of companies, products, and services used in this Installation

Guide may be trademarks, trade names or service marks of others and VIZIO, Inc. dis- claims any interest in trademarks, trade names or service marks other than its own. Mention of non-VIZIO products is for informational purposes only.



**Caution:** Avoid exposing a drive to magnetic fields. Security devices with magnetic fields may include airport walk-through devices and security wands. Airport conveyor belts or similar security devices that check carry-on luggage generally use X-rays and should not cause magnetic damage to drives.

If you are traveling internationally, check the customs regulations for device use for each country you will visit, and check the power cord and adapter requirements for each location in which you plan to use the computer as voltage, frequency and plug configurations may vary.



**Warning:** To reduce risk of electric shock, fire or damage to your device or other property, do not attempt to power the device with a voltage converter kit sold for appliances.

## Battery Disposal



**Caution:** Battery cells may explode. Do not dispose of the battery in a fire or with ordinary household waste. Dispose of batteries promptly. Replace the battery only with the same or equivalent type of battery recommended by VIZIO.



© 2016 VIZIO INC. ALL RIGHTS RESERVED.  
160622AD-US-NC